



# FOWLER

HOISTS • FORMWORK • PLATFORMS

## THE FOWLER SOLUTION

**Safety / Innovation / Versatility / Certainty**

*The ability to Design, Engineer and Manufacture sets us apart in the Industry. We are a Safety led Business driven by Innovation to give our Clients certainty in our delivery.*



## SAFETY

Safety is always top of mind. We pride ourselves in achieving bespoke solutions with each and every client and their respective projects. We strongly believe a safe outcome is driven through aligned designs and solutions that will inherently provide the proper mechanisms for our Employee's to operate.

We want to make safety personal to all involved. Our systems and procedures are constantly reviewed and reinforced through training. It is our priority to ensure that all those who work for and with us, get home safely each day.

## INNOVATION

The Fowler group offers in-house design and manufacture to help create positive changes in our industry. Our team has a wealth of knowledge and experience both locally and internationally to ensure that we maintain our standing as Industry leaders.



## VERSATILITY

Our multi-disciplined business allows us to collaborate internally enabling us to streamline our offering to the industry. We are able to provide access solutions, perimeter protection, vertical movement of workers and material, sales and hire of formwork & solutions, and all relevant expertise and resource to deliver complete packages.

## CERTAINTY

The Fowler group is part of a multi-national business. We have operations throughout Australia, Asia, Africa and Europe. The Fowler group is supported by secure financial Investors. We are not dependent on external suppliers, as we are a manufacturer to the industry. This allows us the ability to supply sufficient equipment for **large scale** projects of over the past several years – including the three commercial towers at Barangaroo South (Lendlease 2015) & Taylor's Walk Botany (Richard Crookes 2016) & Uno Apartments Green Square (Westbourne 2018)



# WHY CHOOSE FOWLER?



## SAFETY AND QUALITY FIRST

Not only do we have a management team to lead a safety culture with our workforce, we are able to provide innovative solutions which are inherently safe. This collaborative approach with our clients limits the risk to our projects.

## FINANCIAL STRENGTH

Fowler is securely funded through its private equity partners. Our partners own and operate similar companies overseas. Fowler's past financial performance provides a strong history of profitability. Our offshore partners have committed to supporting growth of the business in the Australian market.

## SUPERIOR ENGINEERING AND MANUFACTURE

Our team has extensive knowledge and experience in the local Industry; together with our international team we are able to combine our expertise to generate the best possible outcome. The group has been manufacturing formwork and access solutions for more than 40 years.



## MANAGEMENT TEAM

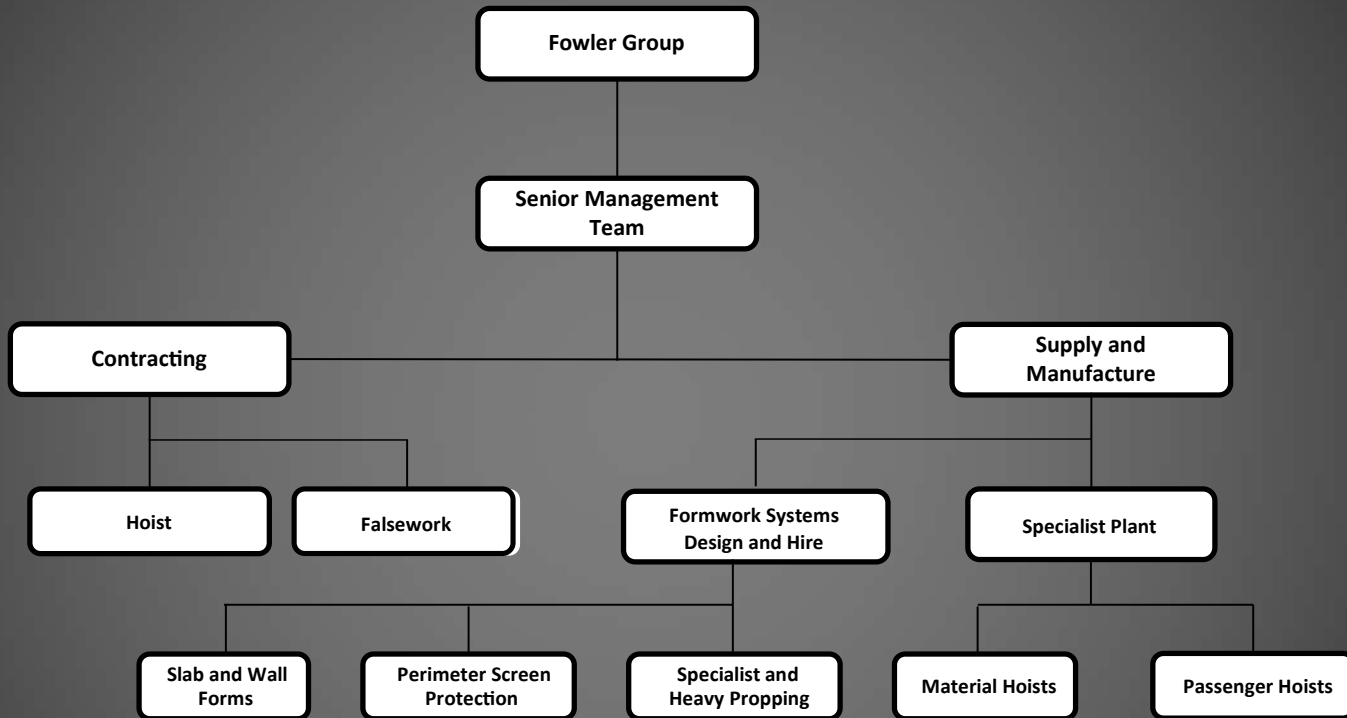
Our management delivery team has brought change and innovation to the industry and shaped the culture and approach to frame construction with particular regard to safety. Our expertise is second to none with experience ranging from owning and operating leading concrete frame and hoist businesses, through to managing engineering lead businesses. Our focus will be to provide solutions, value add, and achieve best cost, time, environmental and quality results.

## OUR EQUIPMENT

Our equipment is best Industry practice. A testimonial of our achievements may best be demonstrated with the supply of world first formwork solutions to Barangaroo. As a manufacturer it allows us to ensure solutions are safe, environmentally friendly, productive, time saving and with a reduction in material waste and overall delivery costs.



# FOWLER GROUP CAPABILITY



# FOWLER GROUP PEOPLE

## SUPPLY, CONTRACTING & SALES

**Darren Borg**  
Chief Sales Officer

**Mel Cassini**  
Formwork Sales Manager

**Brian Ferguson**  
Hoist Operation Manager

## FINANCE & ADMINISTRATION

**Paul Corner**  
Director

**Ofelia Tan**  
Chief Financial Officer

**Sam Peters**  
IT , import and export, Shipping

## DESIGN & ENGINEERING

**Chris McGuigan**  
Lead Engineer / Designer ( Formwork Hoists)



An aerial photograph of a construction site. The foreground shows a large, flat concrete slab with a grid of rebar. In the middle ground, there are several cylindrical structures under construction, some with rebar cages. Scaffolding is visible around the site. In the background, there are trees and buildings, suggesting an urban environment. The lighting is bright, indicating daytime.


## ABOUT FOWLER

*Fowler is a solution led business in the construction and infrastructure sectors*

Fowler has been in operation for 15 years in the Sydney market, and with more than 40 years of international experience, Fowler has an established and proven track record of delivering complex projects of all sizes, on time and on budget.

Our long history and global network gives us access to industry-leading systems and methodologies, perfected over time by lessons learned. Fowler is one of the very few businesses in the industry to have both an in-house design, engineering and manufacturing capability. Our labour capability is well trained and experienced in the use of our multiple systems.

**Integrated, multi-disciplined total solutions**



***Whether our clients choose an integrated total solution, or a single package of works, Fowler delivers quality on time, on budget.***

***Our services include:***

- Formwork delivery (high strutting only)
- Hire of Hoist
- Hire of formwork systems
- In-house design and engineering
- Sales and Manufacturing of formwork
- Supply of man and material hoists
- Servicing Contracts Man & Material Hoists
- Supply of formwork hoists
- Back Propping supply and Install
- Loading platforms
- Rigging services
- Staging and public access
- Lightweight aluminium access solutions

# COMPANY DATA

## FACILITIES

\* 9000 m2 square warehouse facility with additional 4000m2 hard stand yard - located at 1333 The Horsley Drive, Wetherill Park NSW 2164

## STAFF

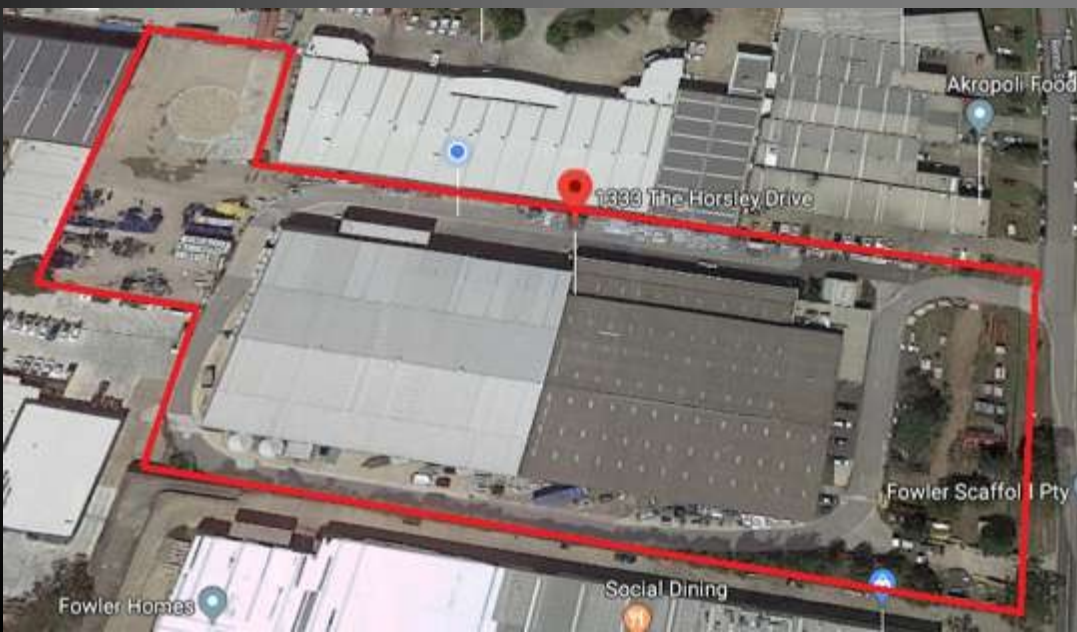
The Fowler group consist of 100 employees.

Over 20 Employees are within our business management team.

Our team sits over three core divisions, consisting of a hire and sale business, contracting division and engineering manufacturing.

## RESOURCES

As with our Staff, we directly employ all of our workers to facilitate the delivery of all of our streams. The skill sets of our people range from electricians, riggers, scaffolders and yard staff and drivers.



# ASSET HOLDINGS

Fowler equipment assets in Australia are as follows:

- 30,000m2 of horizontal formwork system
- 6000m2 of vertical formwork system
- 1000 tons of TF60 modular shoring system
- 90 man and material hoist 2ton to 5ton
- 6 twin mast material hoists 3.7tons
- 4 internal formwork hoists
- 3 Scania truck and trailer with cranes
- 5 hoist service vehicles and 1x 4.5ton truck
- comprehensive manufacturing and alteration services



# CONTACT DETAILS

Phone: 9426 9700 Email: [info@fowlerhire.com.au](mailto:info@fowlerhire.com.au)

Paul Corner: 0415 640 978

Darren Borg: 0488 770 821

Head Office: 1333 The Horsley Drive,  
Wetherill Park NSW 2164

